

# RAY MINI

01-Mar.-2019

## 1.0

PAR16 max. 15W | GU10 | 100-240VAC | 50-60Hz  
 CE IP20 0.9m

### aluminium

white texture	300220W0
aluminium brushed	300220L0
copper	300220P0
black texture	300220B0

### wood

walnut wood	300220WN0
-------------	-----------

### OPTIONAL

for PAR16 lamps see our catalogue

## 2.0

2xPAR16 max. 15W | GU10 | 100-240VAC | 50-60Hz  
 CE IP20 0.9m

### aluminium

white texture	301220W0
aluminium brushed	301220L0
copper	301220P0
black texture	301220B0

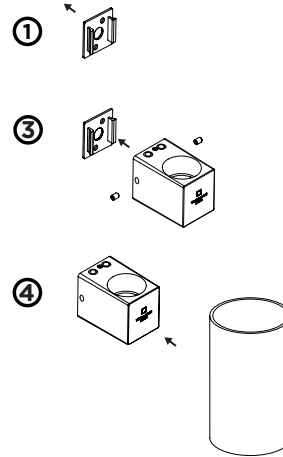
### wood

walnut wood	301220WN0
-------------	-----------

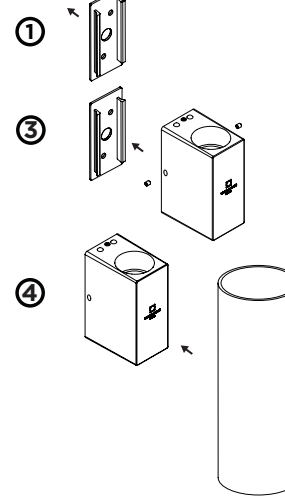
### OPTIONAL

for PAR16 lamps see our catalogue

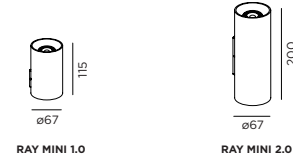
RAY MINI 1.0



RAY MINI 2.0



## DIMENSIONS



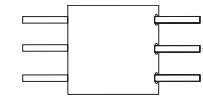
## MOUNTING INSTRUCTION

- 1 Mount the base plate on the wall

## POWER CONNECTION

- 2 Connect the power supply.

Interior: STANDARD version



- 3 Mount inset on the back plate with side screws

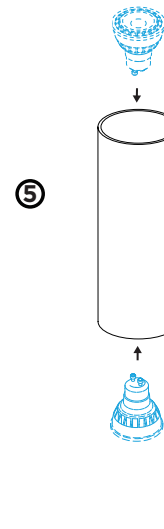
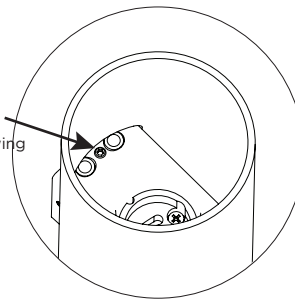
- 4 Click cover over the inset

\* For optional locking, unscrew the grub screw app. 3mm. The cover is now stable.

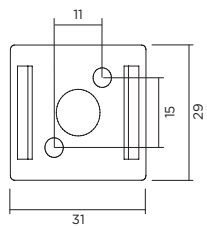
- 5 Mount the bulb.

### FOR OPTIONAL LOCKING:

\* Lock the cover by unscrewing the grub screw app. 3mm. Then the cover is stable.



RAY MINI 1.0



RAY MINI 2.0

